



---

# WIND & SOLAR POWER

---

[WWW.OMNIFLOW.PT](http://WWW.OMNIFLOW.PT)



## **Análise para proposta de iluminação de espaço público com Omniled 070**

### ***Technical proposal for public lighting with Omniled 070***

#### **Passadeira Moledo do Minho**

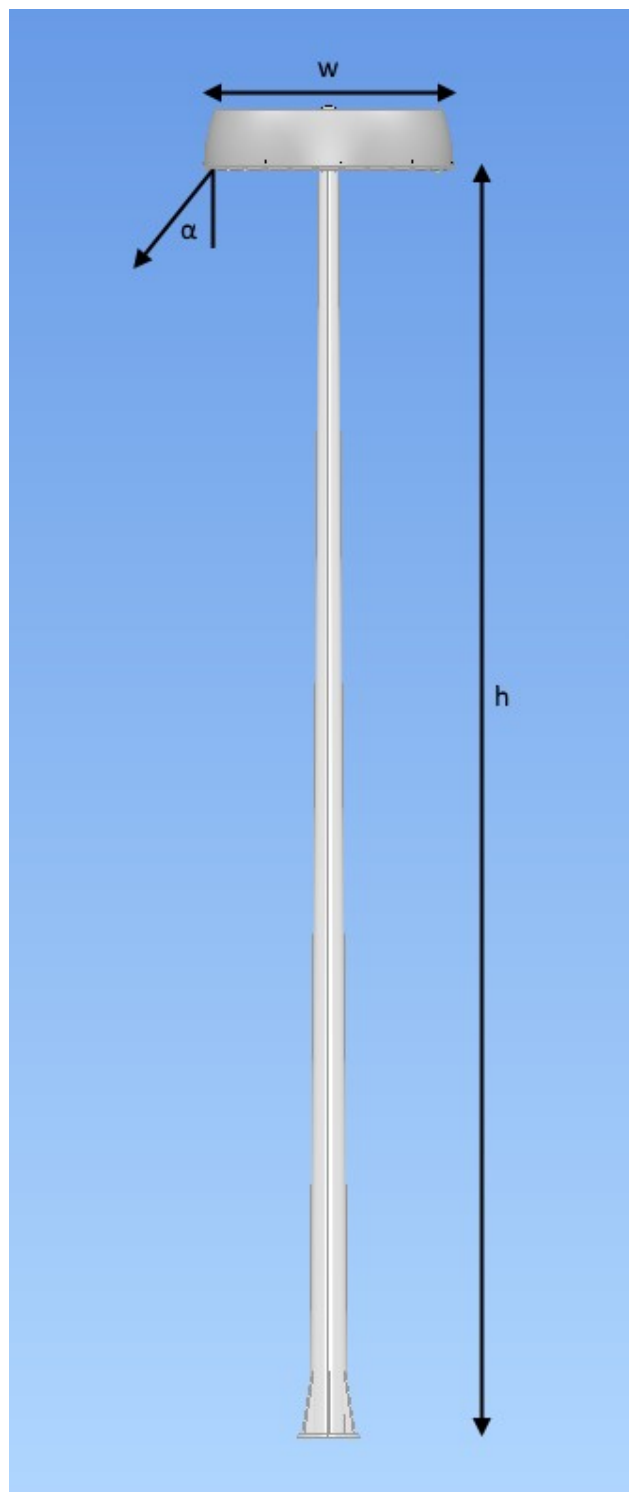
#### **Índice**

#### ***Table of contents***

Ficha de dados da luminária / <i>Luminaire datasheet</i>	3
Planta do Projeto / <i>Project plan</i>	5
Modo Normal / <i>Normal mode</i>	
Sobreposição / <i>False colors overlap</i>	5
Linhas Isográficas / <i>Isolux lines</i>	6
Gráfico de Valores / <i>Value Chart</i>	6
Resultados Modo Normal / <i>Normal Mode Results</i>	7



Technical Data	2 x OMNILED 070
Dimensions (W/H/D)	1200 / 300 / 1200 mm
Generator	Direct drive, ironless stator permanent magnet generator
DC controller	Hybrid wind/solar 12-volt regulator
Power	Wind – 100W @ 11 m/s   Solar – 60Wp
Weight	35kg
Device type	Self-sustained lighting system
Battery	12V 1000Wh Lead Crystal (Built in)
Pole height	8 m
Lighting power	22.5 W (Motion Activated)   5 W (Standby)
Luminous flux	3600 lm (1035lm Standby) 15*45° Lens
Color temp (K)	4000K



**Fig. 1** - Representação da Luminária ( $h=8\text{m}$ ,  $w= 1.2\text{m}$ ,  $\alpha=40^\circ$ ) - *Luminaire side view*

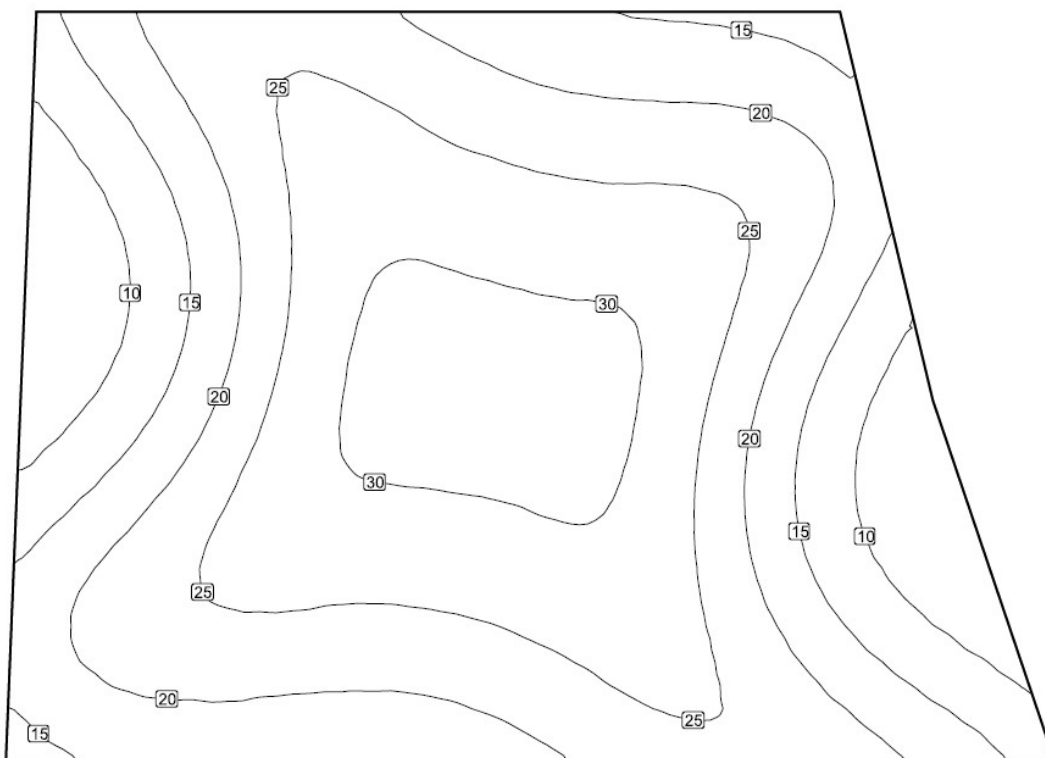


**Fig. 2 – Planta do Projeto – Project Plant**

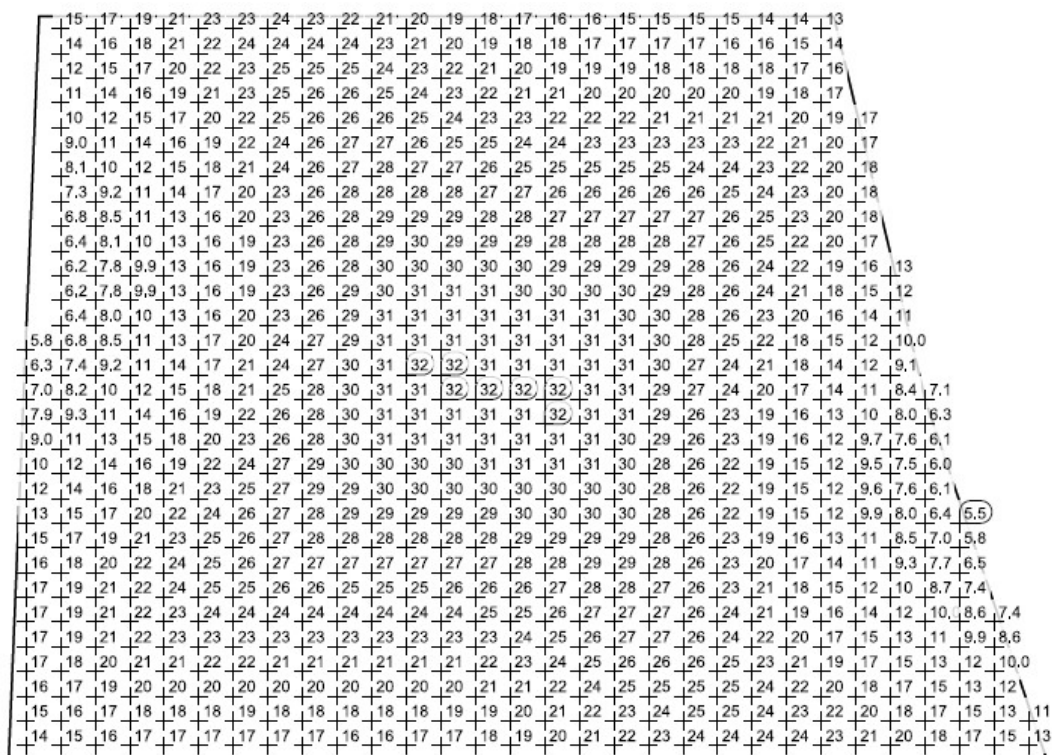


**Fig. 3 – Cores Falsas (Normal) - False Colors (Normal)**





**Fig. 4 -** Renderização das linhas isográficas (Normal) - *Isolux lines (Normal)*



**Fig. 5 –** Gráfico de valores (Normal) – *Value Chart (Normal)*

**Resultados (Normal) – Results (Normal):**

<b>Média - Average</b>	21.2 lux
<b>Máximo - Maximum</b>	31.6 lux
<b>Mínimo - Minimum</b>	5.22 lux
<b>Min/Average</b>	0.25

**Omniflow (Portugal), Jun 18, 2019**

Project executed using DIALux evo Software